
RedCap for Screening





Stanford Stroke & Neurocritical Care Research Study Screening Tool

August 28, 2024
Stephanie Kemp

BACKGROUND

Challenges to screening

Among other things...

- Parallel screening by research coordinators and clinicians
- Screening for multiple simultaneous trials
- Complexity of unique inclusion/exclusion criteria in each trial
- Limited prioritization of research screening by clinicians during busy clinical times

How to improve

2015 ~ multidisciplinary group, including stroke & NCC faculty and fellows, research coordinators, and biostatisticians

Developed an electronic tool to improve the efficiency and efficacy of screening for multiple simultaneous acute clinical stroke trials

Goals:

- automate the evaluation of inclusion and exclusion criteria
- improve screening procedures
- streamline the communication process between the stroke research coordinators and the stroke clinicians.

Publication:

Spokoiny I, Lansberg M, Thiessen R, Kemp SM, Aksoy D, Lee Y, Mlynash M, Hirsch KG. Development of a Mobile Tool That Semiautomatically Screens Patients for Stroke Clinical Trials. *Stroke*. 2016 Oct;47(10):2652-5. doi: 10.1161/STROKEAHA.116.013456. Epub 2016 Sep 8. PMID: 27608822; PMCID: PMC5039105.

Why REDCap?

Institutionally approved for protected health information

HIPAA compliant

Free to our researchers as part of Stanford's CTSA Award

Uses simple conditional logic to sort the applicable trial eligibility choices

Update the tool quickly and easily - various studies starting and stopping unpredictably, the ability to rapidly update both survey content and the branch logic algorithms as well as personnel access to the results database

Accessible via a weblink from any internet browser

Provides an automatic record of all patients screened, which is helpful for clinical metrics and research screening logs

WORKFLOW



Clinical team enters:

Basic demographic information (name, MRN)

Patient location (in-patient vs outpatient)

Diagnosis- 4 choices:

- Ischemic (stroke or TIA)
- Hemorrhagic
- Cardia Arrest & TBI (recently added for SIREN studies)
- Not stroke

Date & time of onset

Additional details depending on diagnosis (ie. NIHSS, GCS, etc)

WORKFLOW



Clinical team receives:

a list of trials for which the patient may be eligible, along with a brief description of each trial and inclusion criteria



Clinical team selects one of the following choices for each study presented:

- * Eligible
- * Not Eligible
- * Not Eligible Now-Continue Screening



A free text box allows the clinical team to enter pertinent details that may help the coordinators with screening (ie. patient expressed interest in studies, patient unable to consent, need LAR, etc)

WORKFLOW



REDCap system automatically generates a secure e-mail to the study coordinators, who then follow a hyperlink to review the screening results

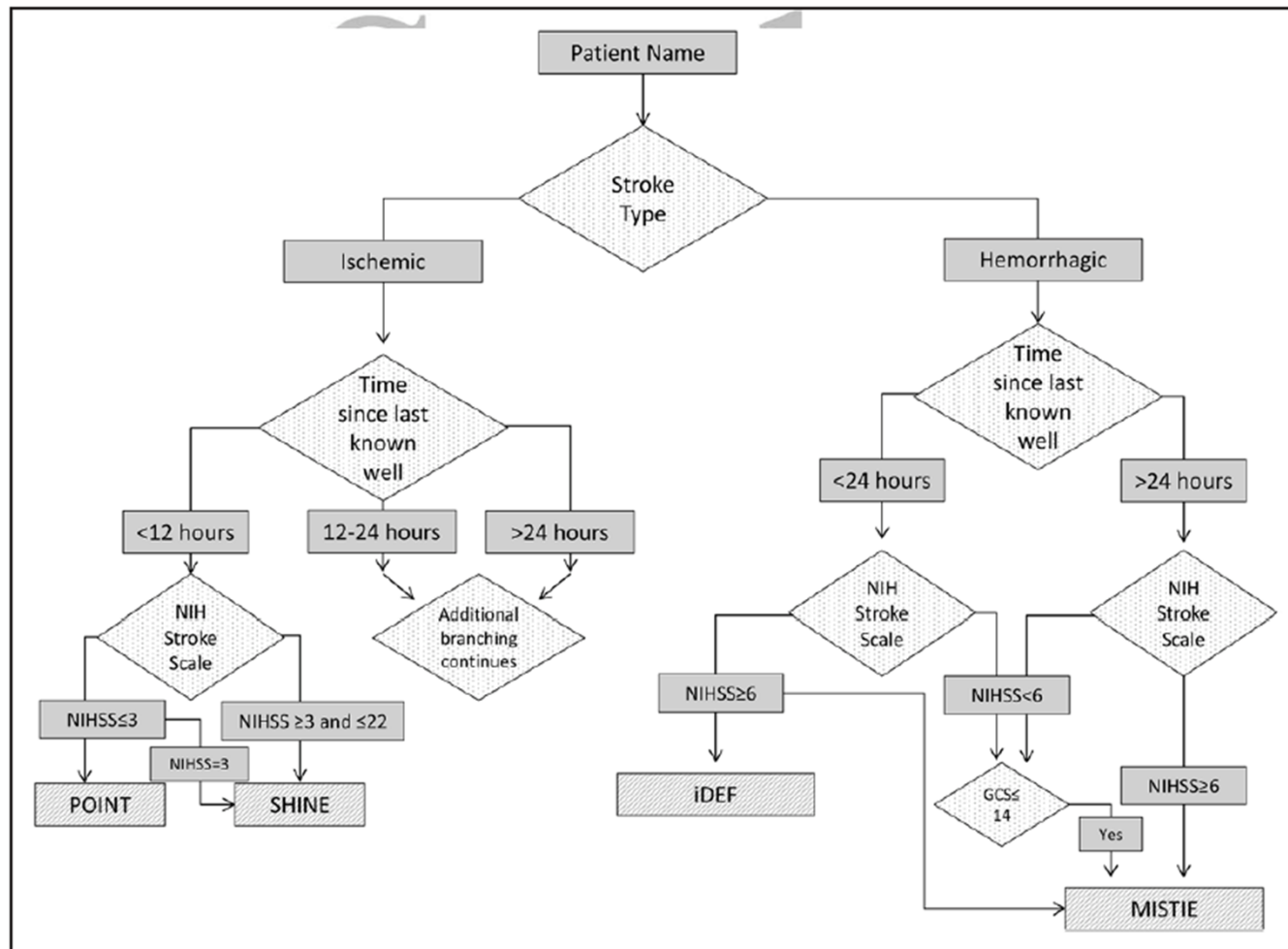


Coordinators continue to screen / help determine eligibility / enroll!

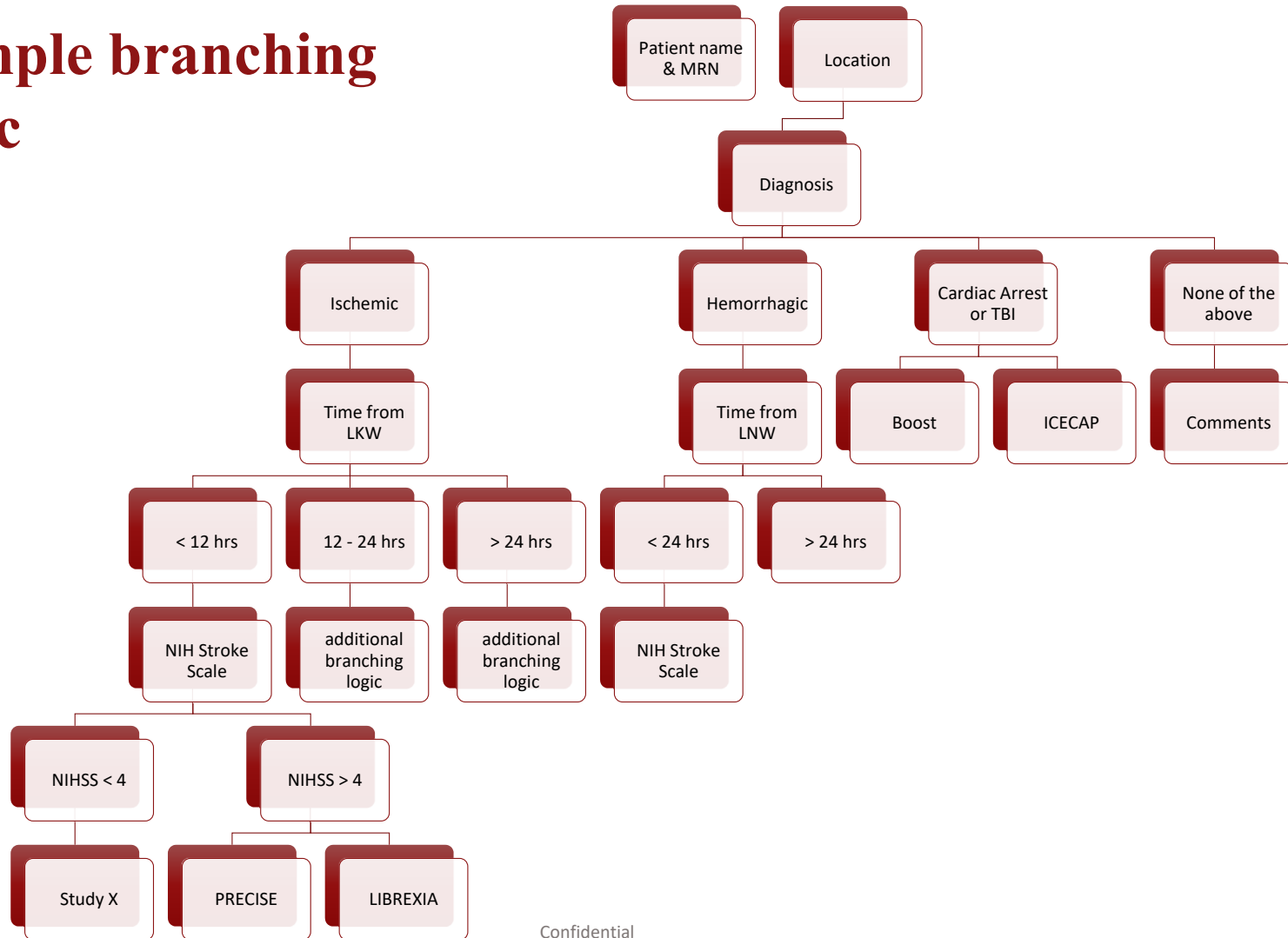


Coordinator updates REDCap with the final outcome of the screening (patient enrolled, determined not eligible, continue screening, etc)

Sample branching logic



Sample branching logic



THANK YOU!