



ASPIRE Monthly Webinar -- June 22 3-4 pm ET

- Consent Role Play and ASPIRE Data Quality
- Zoom: 951 0504 2660 Passcode: *aspire*

Recruitment Update

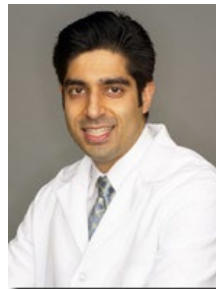
TOTAL	Since Last Newsletter
94	8

- 8 Randomizing Sites**
- Morton Plant Hospital*
 - UC Irvine Medical Center
 - UPMC Presbyterian Hospital
 - University of Iowa
 - University of Nebraska
 - University of Pennsylvania
 - Wake Forest Baptist
 - Yale



Congratulations for Shortest Time from Initiation to 1st Randomization!

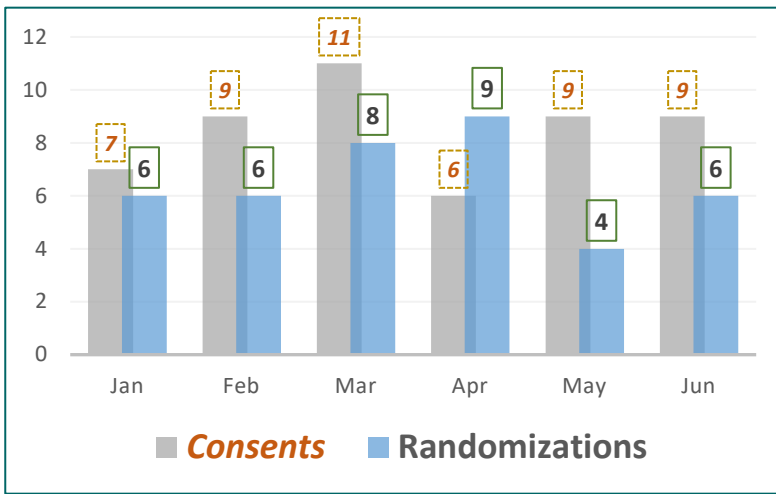
- Site Initiated **May 19**
- Patient Consented **May 25**
- Subject Randomized **June 16**



Ajay Arora (PI)
Jena Botsford (PSC)
(not pictured)



--ENROLLMENT GOAL FOR JUNE--
Let's reach an important ASPIRE milestone –
Our 100th Participant!



#Sites released to enroll:

123

#Sites with randomizations in 2022:

29

Talking Points for Consent Discussion

1. This is a hard time for you/your family.
2. Independent of ASPIRE, your medical issues – atrial fibrillation, clotting, bleeding - are important and shouldn't be avoided.
3. ASPIRE can be helpful and easy – we will follow your health and help you stay on top of things that are important, such as blood pressure.
4. Anxiety or nervousness about taking study meds is natural, but rather than step back, this could be right time to confidently, and with a team, step forward.

ASPIRE Publication

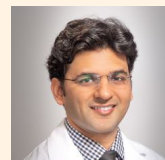
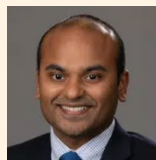
Our recently published review paper -- *In Search of the Optimal Antithrombotic Regimen for Intracerebral Hemorrhage Survivors with Atrial Fibrillation*

(<https://pubmed.ncbi.nlm.nih.gov/35657478/>)

-- examines the uncertainties in the treatment of patients with ICH and atrial fibrillation and the need for well-performed clinical trials, such as ASPIRE.

Thanks to the ASPIRE PIs who collaborated on our 1st paper –

Stacey Wolfe (Wake Forest), Nirav Bhatt (Grady Memorial), Tarun Girotra (University of New Mexico)



ASPIRE CONTACT INFORMATION

ASPIRE@YALE.EDU 24/7 Hotline: (800) 618-0643

Principal Investigators
Program Managers

Kevin Sheth (443) 615-4729 Hooman Kamel
Laura Benken [NCC] (513) 558-3925
Catherine Viscoli [Yale] (203) 927-0443

Randomizations by Site and Year

SITE	2020	2021	2022
Augusta University Medical Center		1	
Baystate Medical Center	1		1
Beth Israel Deaconess Medical Center			1
Cedars-Sinai Medical Center		1	
Central DuPage Hospital		1	
Cleveland Clinic		1	
Harborview Medical Center	1		1
Hospital of the University of Pennsylvania		1	1
Jackson Memorial Hospital		1	
Kaiser Permanente Los Angeles Medical Center		2	
Kaiser Permanente Sacramento Medical Center	1		
Kings County Hospital Center			1
Mayo Clinic	1		
MedStar Georgetown University Hospital	1		1
Medical University of South Carolina University Hospital		2	
Memorial Hermann Texas Medical Center	1		1
MetroHealth Medical Center		1	
Morton Plant Hospital			1
Moses H. Cone Memorial Hospital			1
NYU Langone Hospital - Brooklyn		2	2
North Shore University Hospital		1	
OSF St. Francis Medical Center	1		
OSU Wexner Medical Center		1	
OU Medical Center		1	1
Ochsner Medical Center - Main Campus		1	
Oregon Health & Science University Hospital	1	1	2
Prisma Health Greenville Memorial Hospital		2	1
Rhode Island Hospital			1
Rush University Medical Center			1
St. John Medical Center			2
Stanford University Medical Center		1	
Tampa General Hospital		1	
The Queen's Medical Center	1		1
The University of Vermont Medical Center			2
UC Davis Medical Center	1		1
UC Irvine Medical Center		3	1
UH Cleveland Medical Center			2
UPMC Presbyterian Hospital	1	2	1
UVA Medical Center		1	1
University of Alabama Hospital		2	
University of Chicago Medical Center			2
University of Cincinnati Medical Center		2	1
University of Iowa Hospitals & Clinics	3	1	1
University of Nebraska Medical Center	1		2
University of New Mexico Hospital		3	
University of Texas Health Science Center San Antonio		1	
University of Utah Healthcare	1		
Wake Forest Baptist Medical Center	1	2	2
Yale New Haven Hospital	1	3	3
	11	44	39